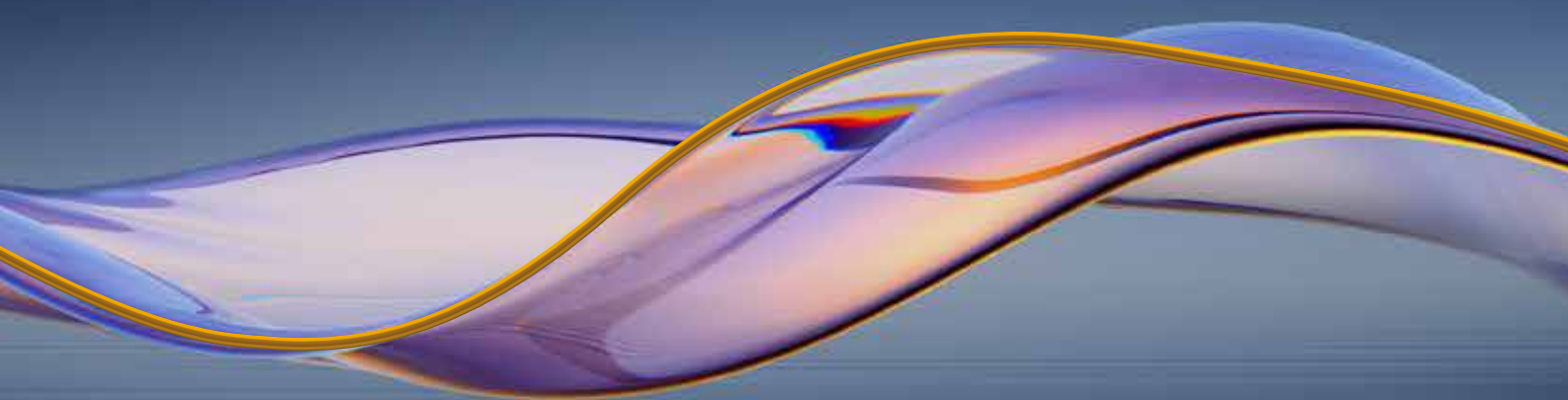
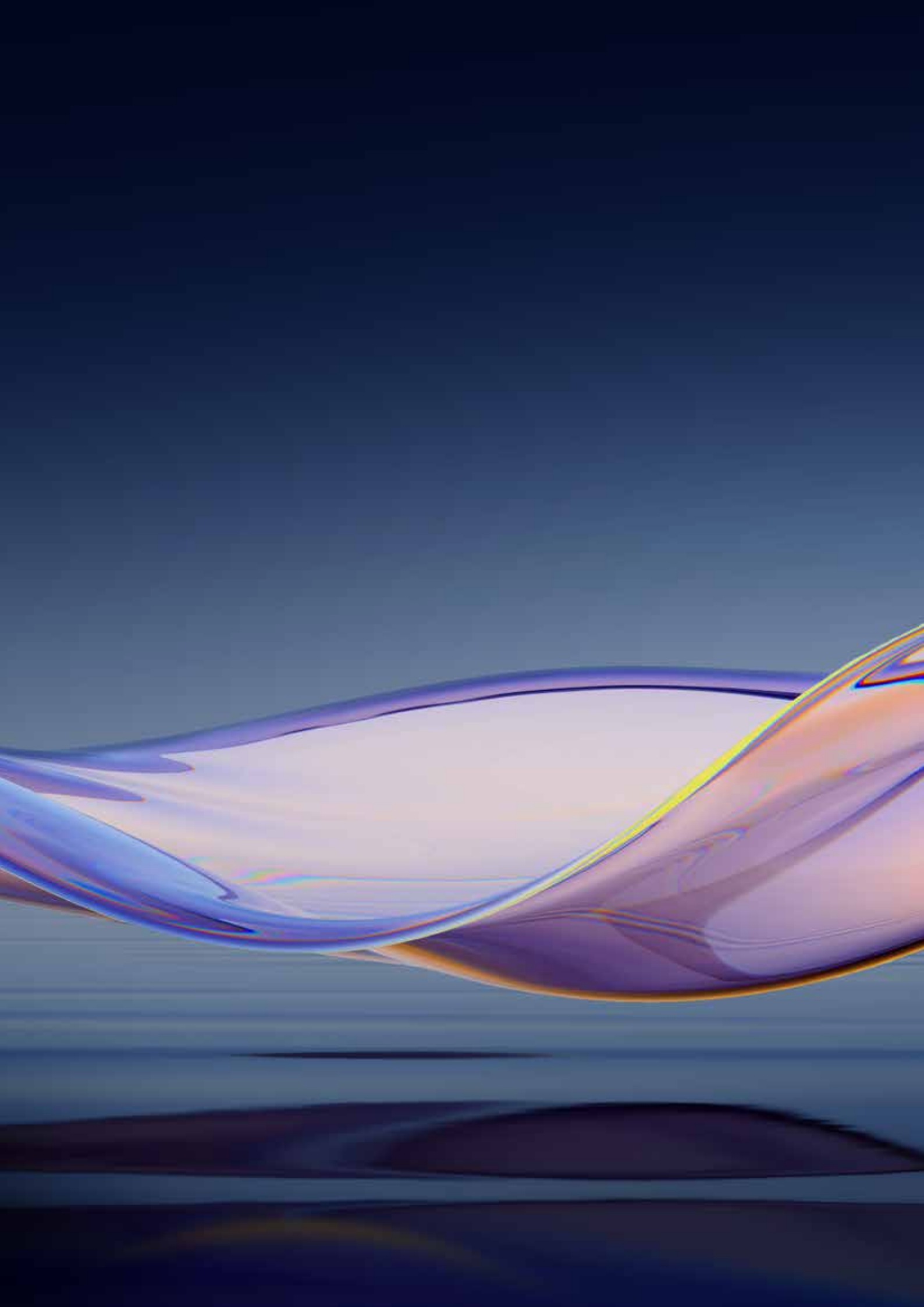


ARYSTO
SLEEK

Luxury
Refreshed



DECEMBER 2022



MERLYN
ARYSTO



ARYSTO

SLEEK

LUXURY REFRESHED

The ARYSTO SLEEK collection is a new range of lovingly crafted shower enclosures in stunning contemporary colours. Clean lines and timeless elegance combined to give you a 360-degree luxury showering experience that matches your style and your budget.

The perfect expression of our love of design, obsession for innovation and passion for top quality materials, it is everything you would expect from our luxury Arysto range. Featuring an ultra-slim profile, 8mm protected glass and discrete fixings, this sleek design makes an elegant statement in any bathroom. Plus, award winning customer service that is with you every step of the way.



COLOURED FINISHES

Create a bathroom that's as unique and individual as you with our collection of four stunning contemporary colours.

Colour Options...



MB = Matt Black
Enclosures & Wetrooms



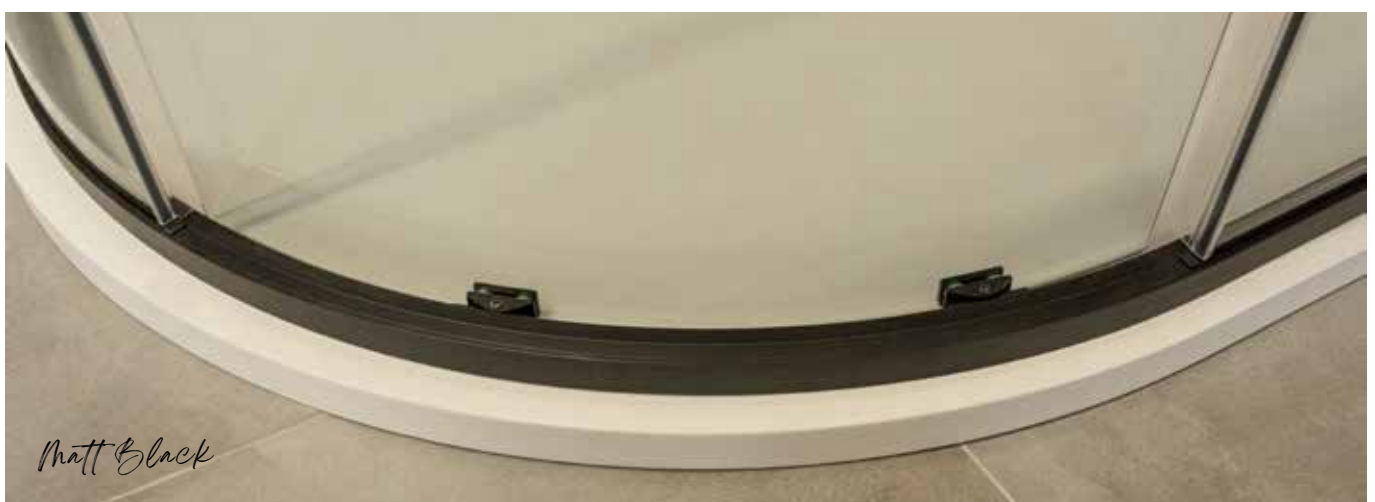
BBR = Brushed Brass
Enclosures & Wetrooms



Standard Chrome
Enclosures



BBZ = Brushed Bronze
Wetrooms only



FEATURES & BENEFITS



Easy to clean and maintain - Mershield Stayclear™ invisible protective glass coating prevents the build-up of limescale and soap to keep your shower enclosure looking like new for longer.



Lifetime Guarantee – MERLYN is committed to developing products that meet the highest standards. We are so confident in our products and service, that we offer a product lifetime guarantee (up to 20 years).



Reversible door – Arysto Sleek doors can be fitted for either left or right hand entry depending on the bathroom design and layout.



Concealed fixings - A stylish design with discrete, hidden fixings and no visible screw holes for a clean, premium finish.



Quick release rollers - Our Sliding and Quadrant door options feature quick - release bottom rollers for easy cleaning.



Recyclable packaging – Delivered safely and securely with minimal packaging and no single use plastics.

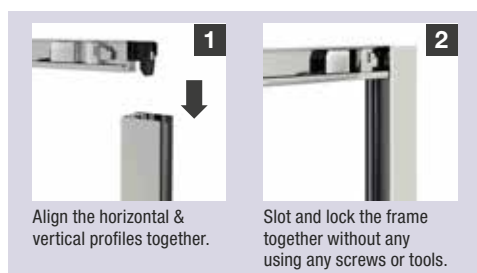
Soft close – The door opens and shuts with virtually no sound, making it the perfect choice for family bathrooms.

Multi-purpose - Suitable for wetroom and shower tray application.

Anodised finish - The colour layer is fully integrated with the underlying aluminium substrate, so it cannot chip or peel. Making it more durable than powder coating.

Handles - Our Chrome products have a solid metal chrome handle. Matt Black and Brushed Brass have a double metal handle.

Quick and easy installation - Our Sliding, Quadrant, Hinge and Infold shower enclosures can be installed in two simple steps.





CONTENTS

The ARYSTO SLEEK Collection	4
ARYSTO SLEEK	8
Sliding Door	10
Infold Door	12
Quadrant Door	14
Hinge Door	16
Hinge Door & Inline Panel	18
Bifold Door	20
Framed Wetroom Panels	22
Truestone Trays	24
Level25 / Level25-SR	28
Touchstone-SR	29





LIFETIME
GUARANTEE



MERSHIELD™
STAYCLEAR



1950
MM
HEIGHT
STANDARD RANGE



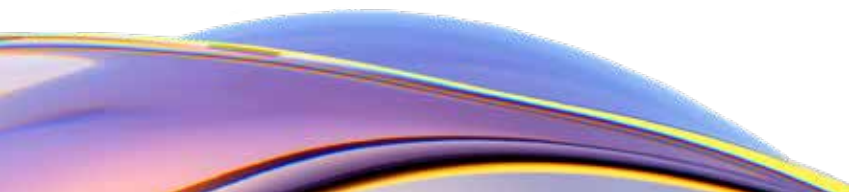
8_{MM}
GLASS
THICKNESS

ARYSTO

SLEEK

There's nothing quite like stepping into a beautiful bathroom. Many of us are recreating this room as we increasingly value the importance of wellness, relaxation, and self-care. Our stunning Arysto Sleek range is designed to act as a centrepiece in any bathroom.





SLIDING DOOR



The Arysto Sleek Sliding door is our classic shower enclosure option with a new minimalist, modern design. Crafted using the finest materials for an incredibly smooth-gliding door, it is perfect for smaller spaces and alcoves, or used in conjunction with our side panels to create stand-alone enclosures.

Product Information Per Colour Range - Sliding Door with Side Panel

Size	Code	Adjustment with Side Panel Min-Max	Adjustment in Recess Min-Max	Door Opening	Moving Panel A	Fixed Panel B	Chrome Pricing		Matt Black Pricing (MB)		Brushed Brass Pricing (BBR)	
							Price £ Exc. VAT	Price £ Inc. VAT	Price £ Exc. VAT	Price £ Inc. VAT	Price £ Exc. VAT	Price £ Inc. VAT
1000	AS10	953-993	950-990	375	506	404	698.33	838.00	768.33	922.00	874.17	1049.00
1100	AS11	1053-1093	1050-1090	425	556	454	698.33	838.00	768.33	922.00	874.17	1049.00
1200	AS12	1153-1193	1150-1190	475	606	504	698.33	838.00	768.33	922.00	874.17	1049.00
1400	AS14	1353-1393	1350-1390	575	706	604	799.17	959.00	878.33	1054.00	998.33	1198.00
1500	AS15	1453-1493	1450-1490	575	706	704	890.83	1069.00				
1600	AS16	1553-1593	1550-1590	575	706	804	999.17	1199.00				
1700	AS17	1653-1693	1650-1690	575	706	904	1099.17	1319.00	1207.50	1449.00	1374.17	1649.00

Door is reversible. Highlighted rows come in colour options. Every size is available in chrome. Side & fixed panels come in 6mm glass.

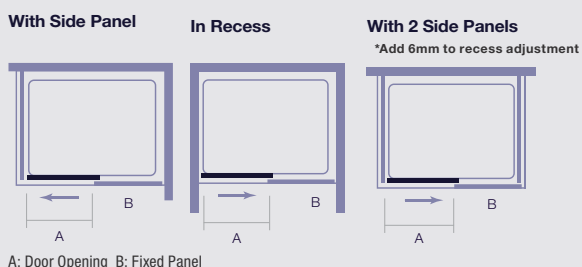
Product Information Per Colour Range - Side Panel

Size	Code	Adjustment Min-Max	Chrome Pricing		Matt Black Pricing (MB)		Brushed Brass Pricing (BBR)	
			Price £ Exc. VAT	Price £ Inc. VAT	Price £ Exc. VAT	Price £ Inc. VAT	Price £ Exc. VAT	Price £ Inc. VAT
760	ASP76	730-750	370.00	444.00	406.67	488.00	461.67	554.00
800	ASP80	770-790	370.00	444.00	406.67	488.00	461.67	554.00
900	ASP90	870-890	399.17	479.00	437.50	525.00	499.17	599.00
1000	ASP10	970-990	499.17	599.00	549.17	659.00	624.17	749.00
1200	ASP12	1170-1190	499.17	599.00				

Door is reversible. Highlighted rows come in colour options. Every size is available in chrome. Side panels come in 6mm glass.



Technical Drawing



Extension profiles available. See Page 30.

Handles



HOW TO ORDER YOUR COLOUR

MB = Matt Black
BBR = Brushed Brass

Chrome is standard code

When ordering your door please use the correct code to the size required. Then add the colour code you need.

Code + Colour Code.
Example: **AS10 + MB**
(Matt Black) = **AS10MB.**



Sliding Door with Side Panel



TRUESTONE®

Match our ARYSTO SLEEK enclosures with our Truestone trays for that all inspiring look and feel.

Colour Options...



MB = Matt Black
Enclosures & Wetrooms



BBR = Brushed Brass
Enclosures & Wetrooms



Standard Chrome
Enclosures & Wetrooms

INFOLD DOOR



The Arysto Sleek Infold door is the perfect space saving design for smaller spaces. It features an innovative Infold door mechanism with a very slim, hidden profile to maximise the opening width into the shower enclosure.

Product Information Per Colour Range - Infold Door with Side Panel

Size	Code	Adjustment with Side Panel Min-Max	Adjustment in Recess Min-Max	Door Opening A	Door Swing B	Inside Door Swing C	Chrome Pricing		Matt Black Pricing (MB)		Brushed Brass Pricing (BBR)	
							Price £ Exc. VAT	Price £ Inc. VAT	Price £ Exc. VAT	Price £ Inc. VAT	Price £ Exc. VAT	Price £ Inc. VAT
760	ANF76	713-753	710-750	519	164	434	645.83	775.00				
800	ANF80	753-793	750-790	559	204	434	645.83	775.00	711.67	854.00	807.50	969.00
900	ANF90	853-893	850-890	659	304	434	665.83	799.00	732.50	879.00	831.67	998.00
1000	ANF10	953-993	950-990	759	404	434	691.67	830.00	757.50	909.00	865.00	1038.00

Door is reversible. Highlighted rows come in colour options. Every size is available in chrome.

Product Information Per Colour Range - Side Panel

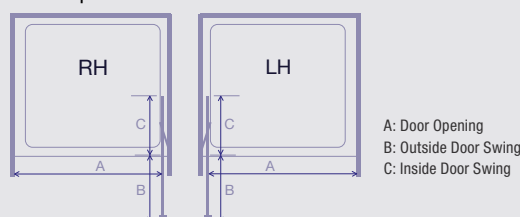
Size	Code	Adjustment Min-Max	Chrome Pricing		Matt Black Pricing (MB)		Brushed Brass Pricing (BBR)	
			Price £ Exc. VAT	Price £ Inc. VAT	Price £ Exc. VAT	Price £ Inc. VAT	Price £ Exc. VAT	Price £ Inc. VAT
760	ASP76	730-750	370.00	444.00	406.67	488.00	461.67	554.00
800	ASP80	770-790	370.00	444.00	406.67	488.00	461.67	554.00
900	ASP90	870-890	399.17	479.00	437.50	525.00	499.17	599.00
1000	ASP10	970-990	499.17	599.00	549.17	659.00	624.17	749.00
1200	ASP12	1170-1190	499.17	599.00				

Door is reversible. Highlighted rows come in colour options. Every size is available in chrome.



Technical Drawing

Door Open



Handles



HOW TO ORDER YOUR COLOUR

MB = Matt Black
BBR = Brushed Brass

Chrome is standard code

When ordering your door please use the correct code to the size required. Then add the colour code you need.

Code + Colour Code.
Example: **AS10 + MB**
(Matt Black) = **AS10MB.**



Infold Door with Side Panel



TRUESTONE®

Match our ARYSTO SLEEK enclosures with our Truestone trays for that all inspiring look and feel.

Colour Options...



MB = Matt Black
Enclosures & Wetrooms



BBR = Brushed Brass
Enclosures & Wetrooms



Standard Chrome
Enclosures & Wetrooms

QUADRANTS



Arysto Sleek Quadrant shower enclosures fit snugly into any right angle corner of the bathroom to give a generous showering space with a stylish curved shower edge. This shape is perfect for small and large bathrooms.

Product Information Per Colour Range - One Door Quadrants

Size	Code	Adjustment Min-Max	Door Opening A	Moving Panel	Curved Panel B	Straight Panel C	Chrome Pricing		Matt Black Pricing (MB)		Brushed Brass Pricing (BBR)	
							Price £ Exc. VAT	Price £ Inc. VAT	Price £ Exc. VAT	Price £ Inc. VAT	Price £ Exc. VAT	Price £ Inc. VAT
900 x 900	A1Q90	870-890 / 870-890	488	615	490	324	790.83	949.00	870.00	1044.00	987.50	1185.00
1000 x 1000	A1Q10	970-990 / 970-990	488	615	590	424	799.17	959.00				
1000 x 800	A1Q1080	970-990 / 770-790	435	561	447	424	832.50	999.00	915.00	1098.00	1040.83	1249.00
1200 x 800	A1Q1280	1170-1190 / 770-790	435	561	447	624	882.50	1059.00				
1200 x 900	A1Q1290	1170-1190 / 870-890	488	615	490	624	924.17	1109.00	1015.83	1219.00	1154.17	1385.00

Door is reversible. Highlighted rows come in colour options. Every size is available in chrome. Fixed panels come in 6mm glass.

Product Information Per Colour Range - Two Door Quadrants

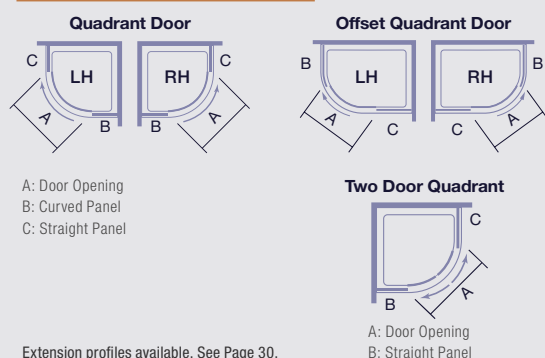
Size	Code	Adjustment Min-Max	Door Opening A	Straight Panel B	Straight Panel C	Chrome Pricing		Matt Black Pricing (MB)		Brushed Brass Pricing (BBR)	
						Price £ Exc. VAT	Price £ Inc. VAT	Price £ Exc. VAT	Price £ Inc. VAT	Price £ Exc. VAT	Price £ Inc. VAT
800 x 800	A2Q80	770-790 / 770-790	392	198	198	732.50	879.00				
900 x 900	A2Q90	870-890 / 870-890	542	298	298	732.50	879.00	805.00	966.00	915.83	1099.00

Door is reversible. Highlighted rows come in colour options. Every size is available in chrome. Fixed panels come in 6mm glass.



Offset Quadrant

Technical Drawing



Handles



HOW TO ORDER YOUR COLOUR

MB = Matt Black
BBR = Brushed Brass

Chrome is standard code

When ordering your door please use the correct code to the size required. Then add the colour code you need.

Code + Colour Code.
Example: **AS10 + MB**
(Matt Black) = **AS10MB.**



One Quadrant Door



TRUESTONE®

Match our ARYSTO SLEEK enclosures with our Truestone trays for that all inspiring look and feel.

Colour Options...



MB = Matt Black Enclosures & Wetrooms



BBR = Brushed Brass Enclosures & Wetrooms



Standard Chrome Enclosures & Wetrooms

HINGE DOOR



Our fully reversible hinge door with side panel is beautifully designed to give a premium quality finish, with discrete design features. The ultra-slim profile is complimented by slim hinges with concealed fixings for a sleek finish that is easier to clean and maintain. **Handle options include:** Stainless steel on the Matt Black and Brushed Brass, and a crafted, shaped handle on the chrome finish.

Our Hinge door comes fully assembled.

Product Information Per Colour Range - Hinge Door with Side Panel

Size	Code	Adjustment with Side Panel Min-Max	Adjustment in Recess Min-Max	Door Opening	Moving Panel A	Chrome Pricing		Matt Black Pricing (MB)		Brushed Brass Pricing (BBR)	
						Price £ Exc. VAT	Price £ Inc. VAT	Price £ Exc. VAT	Price £ Inc. VAT	Price £ Exc. VAT	Price £ Inc. VAT
760	AH76	713-753	710-750	606	624	699.17	839.00				
800	AH80	753-793	750-790	646	664	699.17	839.00				
900	AH90	853-893	850-890	746	764	740.83	889.00	823.33	988.00	932.50	1119.00
1000	AH10	953-993	950-990	846	864	740.83	889.00	823.33	988.00	932.50	1119.00

Door is reversible. Highlighted rows come in colour options. Every size is available in chrome.

Product Information Per Colour Range - Side Panel

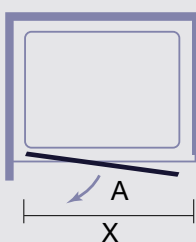
Size	Code	Adjustment Min-Max	Chrome Pricing		Matt Black Pricing (MB)		Brushed Brass Pricing (BBR)	
			Price £ Exc. VAT	Price £ Inc. VAT	Price £ Exc. VAT	Price £ Inc. VAT	Price £ Exc. VAT	Price £ Inc. VAT
760	ASP76	730-750	370.00	444.00	406.67	488.00	461.67	554.00
800	ASP80	770-790	370.00	444.00	406.67	488.00	461.67	554.00
900	ASP90	870-890	399.17	479.00	437.50	525.00	499.17	599.00
1000	ASP10	970-990	499.17	599.00	549.17	659.00	624.17	749.00
1200	ASP12	1170-1190	499.17	599.00				

Door is reversible. Highlighted rows come in colour options. Every size is available in chrome.

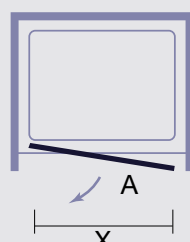


Technical Drawing

Side Panel



Recess



Handles



Chrome
Solid metal handle with a chrome finish

Colour Handles
Double metal handle with colour finish

HOW TO ORDER YOUR COLOUR

MB = Matt Black
BBR = Brushed Brass

Chrome is standard code

When ordering your door please use the correct code to the size required. Then add the colour code you need.

Code + Colour Code.
Example: **AS10 + MB**
(Matt Black) = **AS10MB.**



Hinged Door with Side Panel



TRUESTONE®

Match our ARYSTO SLEEK enclosures with our Truestone trays for that all inspiring look and feel.

Colour Options...



MB = Matt Black
Enclosures & Wetrooms



BBR = Brushed Brass
Enclosures & Wetrooms



Standard Chrome
Enclosures & Wetrooms

HINGE DOOR & INLINE PANEL



Our fully reversible hinge door also comes with an inline and side panel option for larger spaces. The ultra-slim profile is complimented by slim hinges with concealed fixings for a sleek finish that is easier to clean and maintain. **Handle options include:** Stainless steel on the Matt Black and Brushed Brass, and a crafted, shaped handle on the chrome finish.

Our Hinge & Inline door comes fully assembled.

Product Information Per Colour Range - Hinge Door & Inline Panel with Side Panel

Size	Code	Adjustment with Side Panel Min-Max	Adjustment in Recess Min-Max	Door Opening	Moving Panel A	Fixed Panel B	Chrome Pricing		Matt Black Pricing (MB)		Brushed Brass Pricing (BBR)	
							Price £ Exc. VAT	Price £ Inc. VAT	Price £ Exc. VAT	Price £ Inc. VAT	Price £ Exc. VAT	Price £ Inc. VAT
1200	AHI12	1153-1193	1150-1190	505	630	454	999.17	1199.00	1099.17	1319.00	1224.17	1469.00
1400	AHI14	1353-1393	1350-1390	705	730	554	1199.17	1439.00	1315.83	1579.00	1499.17	1799.00

Door is reversible.

Product Information Per Colour Range - Side Panel

Size	Code	Adjustment Min-Max	Chrome Pricing		Matt Black Pricing (MB)		Brushed Brass Pricing (BBR)	
			Price £ Exc. VAT	Price £ Inc. VAT	Price £ Exc. VAT	Price £ Inc. VAT	Price £ Exc. VAT	Price £ Inc. VAT
760	ASP76	730-750	370.00	444.00	406.67	488.00	461.67	554.00
800	ASP80	770-790	370.00	444.00	406.67	488.00	461.67	554.00
900	ASP90	870-890	399.17	479.00	437.50	525.00	499.17	599.00
1000	ASP10	970-990	499.17	599.00	549.17	659.00	624.17	749.00
1200	ASP12	1170-1190	499.17	599.00				

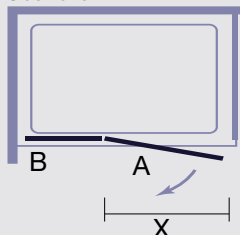
Door is reversible. Highlighted rows come in colour options. Every size is available in chrome.



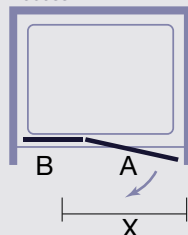
Hinge & Inline Door in Recess

Technical Drawing

Side Panel



Recess



Handles



Chrome
Solid metal handle
with a chrome finish



Colour Handles
Double metal handle
with colour finish

HOW TO ORDER YOUR COLOUR

MB = Matt Black
BBR = Brushed Brass

Chrome is standard code

When ordering your door please use the correct code to the size required. Then add the colour code you need.

Code + Colour Code.
Example: **AS10 + MB**
(Matt Black) = **AS10MB.**



Hinged Door & Inline Panel with Side Panel



TRUESTONE®

Match our ARYSTO SLEEK enclosures with our Truestone trays for that all inspiring look and feel.

Colour Options...



MB = Matt Black Enclosures & Wetrooms



BBR = Brushed Brass Enclosures & Wetrooms



Standard Chrome Enclosures & Wetrooms

BIFOLD DOOR (Chrome Only)



The Arysto Sleek Bifold door optimises space by folding easily into two sections, pulling open and sliding to one side in a single, smooth motion. Ideal for tight spaces with a minimal footprint.

Our Bifold door comes fully assembled.

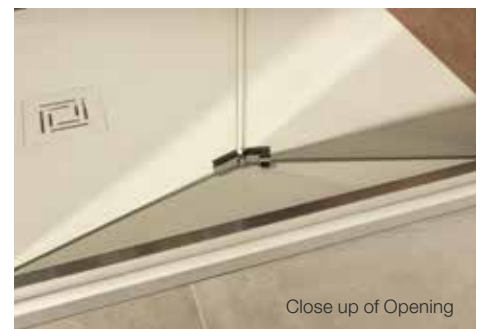
Product Information - Bifold Door (Chrome Only)

Size	Code	Adjustment with Side Panel	Adjustment in Recess	Door Opening A	Inside Door Swing B	Moving Panel	Fixed Panel	Price £ Exc. VAT	Price £ Inc. VAT
760	AB76	713-753	710-750	516	325	305	305	624.17	749.00
800	AB80	753-793	750-790	556	350	325	325	624.17	749.00
900	AB90	853-893	850-890	656	370	375	375	682.50	819.00
1000	AB10	953-993	950-990	711	450	425	425	749.17	899.00

Door is reversible.

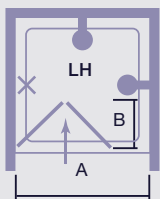
Product Information - Side Panel (Chrome Only)

Size	Code	Adjustment Min-Max	Price £ Exc. VAT	Price £ Inc. VAT
760	ASP76	730-750	370.00	444.00
800	ASP80	770-790	370.00	444.00
900	ASP90	870-890	399.17	479.00
1000	ASP10	970-990	499.17	599.00
1200	ASP12	1170-1190	499.17	599.00



Technical Drawing

Bifold Door



X: Do not put shower head here
 A: Door Opening
 B: Inside Door Swing

Extension profiles available. See Page 30.

Handles



Chrome
 Solid metal handle with a chrome finish



Bifold Door with Side Panel



 TRUESTONE®

Match our ARYSTO SLEEK enclosures with our Truestone trays for that all inspiring look and feel.

Colour Options...



Standard Chrome
Enclosures & Wetrooms

FRAMED WETROOM PANELS



The Arysto Sleek Wetroom shower screen can be used to create a seamless, walk-in shower enclosure. Suitable for use with or without a shower tray, the minimalist frame with optional support bar is perfect for contemporary and traditional bathroom designs.

Product Information Per Colour Range - Framed Wetroom Panel

Size	Code	Adjustment in Recess Min-Max	Brushed Brass Pricing (BBR)		Brushed Bronze Pricing (BBZ)	
			Price £ Exc. VAT	Price £ Inc. VAT	Price £ Exc. VAT	Price £ Inc. VAT
800	AW80 add BBZ or BBR	775-790	640.83	769.00	640.83	769.00
900	AW90 add BBZ or BBR	875-890	657.50	789.00	657.50	789.00
1000	AW10 add BBZ or BBR	975-990	674.17	809.00	674.17	809.00
1200	AW12 add BBZ or BBR	1175-1190	695.00	834.00	695.00	834.00

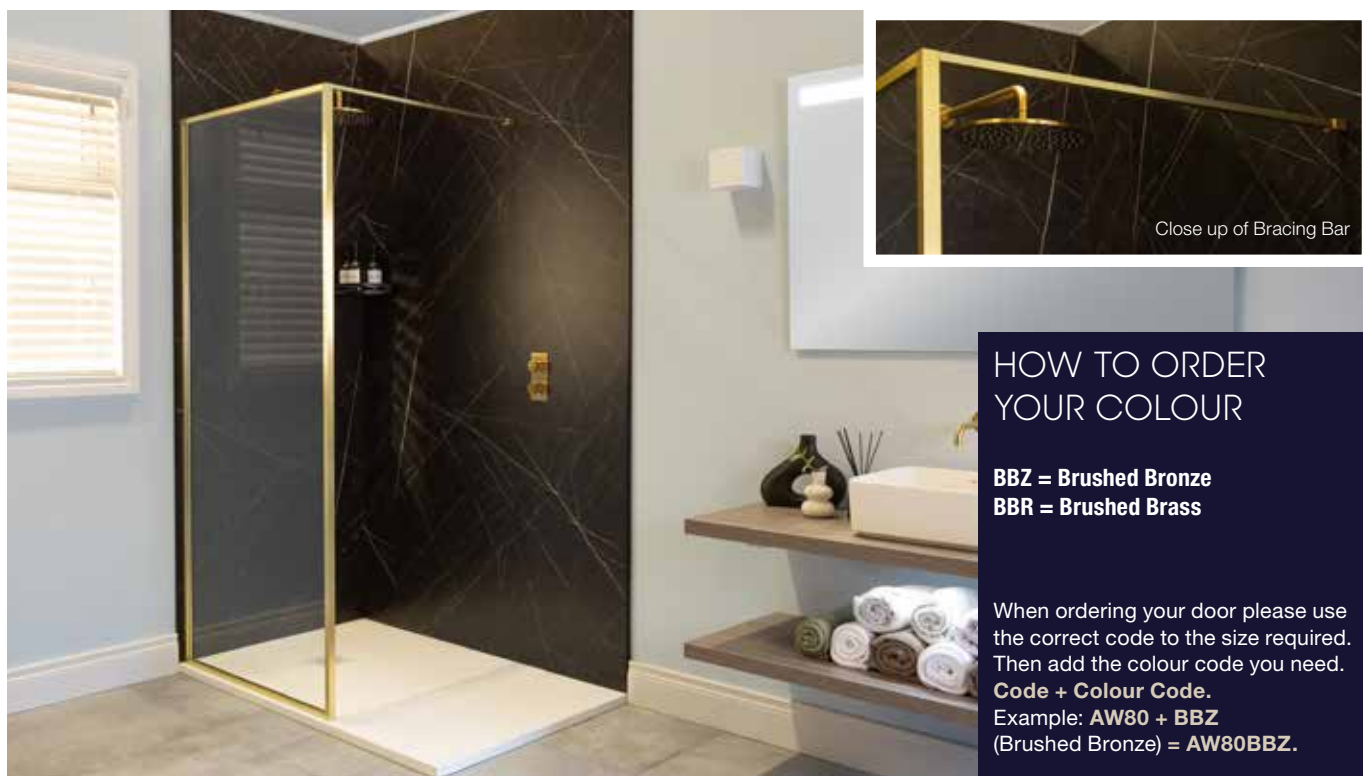
Wetroom Panel is reversible. Available in Brushed Brass and Brushed Bronze only.

Vertical Ceiling Support Bar

Size	Code	Brushed Brass Pricing (BBR)		Brushed Bronze Pricing (BBZ)	
		Price £ Exc. VAT	Price £ Inc. VAT	Price £ Exc. VAT	Price £ Inc. VAT
400	B0040 add BBZ or BBR	142.00	170.40	142.00	170.40

Support Bar

Size	Code	Brushed Brass Pricing (BBR)		Brushed Bronze Pricing (BBZ)	
		Price £ Exc. VAT	Price £ Inc. VAT	Price £ Exc. VAT	Price £ Inc. VAT
1.5M	B0029 add BBZ or BBR	98.00	117.60	98.00	117.60



HOW TO ORDER YOUR COLOUR

BBZ = Brushed Bronze
BBR = Brushed Brass

When ordering your door please use the correct code to the size required. Then add the colour code you need.
Code + Colour Code.
Example: **AW80 + BBZ**
(Brushed Bronze) = **AW80BBZ.**

Framed Wetroom Panel shown in Brushed Brass (BBR)



Framed Wetroom Panel shown in Brushed Bronze (BBZ)



TRUESTONE®

Match our ARYSTO SLEEK enclosures with our Truestone trays for that all inspiring look and feel.

Colour Options...



BBZ = Brushed Bronze
Wetrooms only



BBR = Brushed Brass
Enclosures & Wetrooms



LUXURIOUS TEXTURED SLATE TRAYS

Beautifully hand crafted and ultra-low slate trays, elegant in appearance and luxurious to touch. With 5 finishes to choose from - Black, Sandstone, Graphite, White, and Fossil Grey.

These trays will bring an element of natural beauty and a truly designer finish to your bathroom.



Features & Benefits

- › Ultra Slim: only 30mm in height.
- › Hand crafted from high grade stone resin.
- › 5 Colour Options - Black, Sandstone, Graphite, White and Fossil Grey
- › Integrated Discreet Waste.
- › Luxurious Textured Finish.
- › Can be fitted on or level with floor.
- › Comes with 90mm Fast Flow Waste.
- › Our self cleaning vortex waste design: Offers a maintenance free solution as it doesn't require any cleaning.
- › Our Truestone trays can be cut to size, (amount that can be cut, to be agreed by MERLYN) without affecting the guarantee.
- › Please Note: Images are for illustrative purposes only. The colours & finishes shown in the catalogue are as accurate as possible within the limits of the printing process.



MERLYN Branded Waste Cover

Please ensure that the shower head is not positioned directly over the waste as this may restrict flow rate.



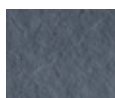
CHOOSE YOUR COLOUR



White
Code W



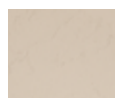
Fossil Grey
Code F



Graphite
Code G



Black
Code B



Sandstone
Code S

All tray codes need the corresponding colour code at the end. (See below) e.g. T108RTW

Rectangular Tray (comes with MERLYN 90mm fast flow waste)

Size	Code	Price £ Exc. VAT	Price £ Inc. VAT
1000 x 800	T108RT	620.28	744.33
1200 x 800	T128RT	734.84	881.81
1200 x 900	T129RT	825.31	990.38
1400 x 800	T148RT	816.67	980.00
1400 x 900	T149RT	898.50	1078.20
1500 x 800	T158RT	864.12	1036.94
1500 x 900	T159RT	1099.81	1319.77
1600 x 800	T168RT	923.04	1107.65
1600 x 900	T169RT	1191.43	1429.72
1700 x 800	T178RT	1013.07	1215.70
1700 x 900	T179RT	1230.71	1476.85

All tray codes need the corresponding colour code at the end.
(See below) e.g. T108RTW

Quadrant Tray (comes with MERLYN 90mm fast flow waste)

Size	Code	Price £ Exc. VAT	Price £ Inc. VAT
900 x 900	T90Q	584.26	701.11

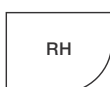
All tray codes need the corresponding colour code at the end. (See below) e.g. T90QW

Offset Quadrant Tray (comes with MERLYN 90mm fast flow waste)

Size	Code	Price £ Exc. VAT	Price £ Inc. VAT
1000 x 800	T108H (L or R)	766.27	919.52
1200 x 900	T129H (L or R)	898.50	1078.20

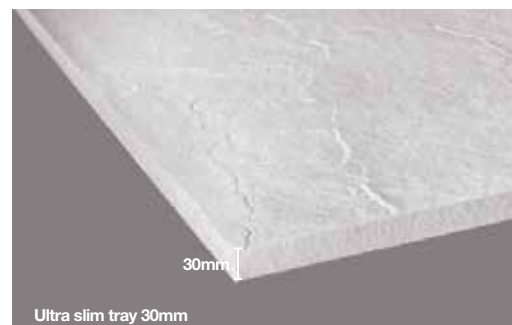
All tray codes need the corresponding colour code at the end. (See below) e.g. T108HW

This product is handed – please choose L for Left and R for Right when ordering.



Square Tray (comes with MERLYN 90mm fast flow waste)

Size	Code	Price £ Exc. VAT	Price £ Inc. VAT
900 x 900	T90RT	653.01	783.61



Ultra slim tray 30mm

SLIP RESISTANT TRAYS

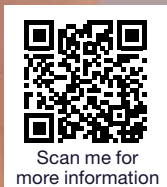
We have carried out all the testing to give you and your family the peace of mind of showering in a safe environment with the splendour of this natural stone effect.



EASY CLEAN
All you need is a soft cloth and warm soapy water.



QUALITY LOOK AND FEEL
The luxury satin look and feel is designed to give confidence while not feeling harsh underfoot.



Exceeds Class C for DIN 51097 - Barefoot ramp test.
This ranks MERLYN in a premium class.

LEVEL25^{SR}

The Level25-SR and standard Level25 trays are sleek and ultra slim creating a modern and contemporary feel. At only 25mm high they can be fitted flush to the floor encompassing all the benefits of a wetroom floor and accessibility but without the costly wetroom installation.

Features & Benefits

- › Ultra slim 25mm low level tray.
- › Sleek minimalist design.
- › Discreet integrated waste cover.
- › Can be fitted on or level with floor.
- › Comes with 90mm fast flow waste.
- › Shower tray 25 year guarantee.
- › The Level25 tray is capped with an easy to clean surface that provides a chemical resistant, anti-bacterial solution due to it's ultra-smooth, non-porous surface.
- › Available in square, rectangular and quadrant trays.

SLIP RESISTANT TRAYS

Rectangular Tray (comes with MERLYN 90mm fast flow waste)

Size	Code	Price £ Exc. VAT	Price £ Inc. VAT
1000 x 800	L108RTAS	502.32	602.78
1000 x 900	L109RTAS	548.18	657.82
1100 x 800	L118RTAS	548.18	657.82
1100 x 900	L119RTAS	548.18	657.82
1200 x 800	L128RTAS	548.18	657.82
1200 x 900	L129RTAS	571.14	685.36
1300 x 800	L138RTAS	816.47	979.77
1300 x 900	L139RTAS	816.47	979.77
1400 x 760	L1476RTAS	816.47	979.77
1400 x 800	L148RTAS	816.47	979.77
1400 x 900	L149RTAS	816.47	979.77
1500 x 800	L158RTAS	878.48	1054.17
1500 x 900	L159RTAS	878.48	1054.17
1600 x 800	L168RTAS	915.19	1098.23
1600 x 900	L169RTAS	915.19	1098.23
1700 x 800	L178RTAS	1041.32	1249.58
1700 x 900	L179RTAS	1048.22	1257.86

Offset Quadrant Tray (comes with MERLYN 90mm fast flow waste)

Size	Code	Price £ Exc. VAT	Price £ Inc. VAT
1200 x 900	L129QLAS	806.05	967.26
1200 x 900	L129QRAS	806.05	967.26

This product is handed – please choose L for Left and R for Right when ordering.

Quadrant Tray (comes with MERLYN 90mm fast flow waste)

Size	Code	Price £ Exc. VAT	Price £ Inc. VAT
900 x 900	L90QAS	587.61	705.13

Square Tray (comes with MERLYN 90mm fast flow waste)

Size	Code	Price £ Exc. VAT	Price £ Inc. VAT
900 x 900	L90SQAS	502.32	602.78

Waste Cover



Please ensure that the shower head is not positioned directly over the waste as this may restrict flow rate.



STANDARD TRAYS

Square Tray (comes with MERLYN 90mm fast flow waste)

Size	Code	Price £ Exc. VAT	Price £ Inc. VAT
900 x 900	L90SQ	358.80	430.56



Quadrant Tray (comes with MERLYN 90mm fast flow waste)

Size	Code	Price £ Exc. VAT	Price £ Inc. VAT
900 x 900	L90Q	419.73	503.68

Offset Quadrant Tray

(comes with MERLYN 90mm fast flow waste)

Size	Code	Price £ Exc. VAT	Price £ Inc. VAT
1200 x 900	L129QL	575.75	690.91
1200 x 900	L129QR	575.75	690.91

This product is handed – please choose L for Left and R for Right when ordering.

Rectangular Tray (comes with MERLYN 90mm fast flow waste)

Size	Code	Price £ Exc. VAT	Price £ Inc. VAT
1000 x 800	L108RT	358.80	430.56
1000 x 900	L109RT	391.56	469.87
1100 x 800	L118RT	391.56	469.87
1100 x 900	L119RT	391.56	469.87
1200 x 760	L1276RT	391.56	469.87
1200 x 800	L128RT	391.56	469.87
1200 x 900	L129RT	407.95	489.54
1300 x 800	L138RT	583.21	699.85
1300 x 900	L139RT	583.21	699.85
1400 x 760	L1476RT	583.21	699.85
1400 x 800	L148RT	583.21	699.85
1400 x 900	L149RT	583.21	699.85
1500 x 800	L158RT	627.48	752.98
1500 x 900	L159RT	627.48	752.98
1600 x 800	L168RT	653.69	784.43
1600 x 900	L169RT	653.69	784.43
1700 x 760	L1776RT	653.69	784.43
1700 x 800	L178RT	743.80	892.56
1700 x 900	L179RT	748.73	898.47



PENTANGLE TRAY



Pentangle Tray

The stunning new MERLYN Pentangle Tray is made from a natural stone resin with a luxurious matte white textured finish.

Size	Code	Price £ Exc. VAT	Price £ Inc. VAT
900 x 900	T90PW	603.81	724.57
1200 x 900	T129PWR	673.70	808.44
1200 x 900	T129PWL	673.70	808.44
1400 x 900	T149PWR	713.44	856.13
1400 x 900	T149PWL	713.44	856.13

This product is handed – please choose L for Left and R for Right when ordering.

Features & Benefits

- › 40mm in height.
- › Hand crafted from high grade stone resin.
- › Integrated discreet waste.
- › Luxurious matte textured finish.
- › Comes with 90mm fast flow waste.

TOUCHSTONE-SR

Designed in a beautiful matt white finish without the harsh surface texture, sometimes experienced in a slip resistant finish. Best in class - exceeding the requirement in two independently tested industry standards.

Features & Benefits

- › 10 Year Guarantee
- › Single skinned with moulded solid under section
- › 50mm high to achieve minimalist design
- › Anti-slip is manufactured into the coating and won't wear
- › 135mm high including tray panel kit
- › Compatible 90mm fast flow waste also available

SLIP RESISTANT TRAYS

Rectangular Tray

Size	Code	Tray Panel Kit	Price £ Exc. VAT	Price £ Inc. VAT
900 x 800	S980RTASTO	Kit 4	239.76	287.71
1000 x 800	S108RTASTO	Kit 4	247.60	297.12
1000 x 900	S109RTASTO	Kit 4	257.10	308.52
1100 x 800	S118RTASTO	Kit 4	257.10	308.52
1200 x 700	S127RTASTO	Kit 4	257.10	308.52
1200 x 760	S1276RTASTO	Kit 4	269.36	323.23
1200 x 800	S128RTASTO	Kit 4	285.52	342.63
1200 x 900	S129RTASTO	Kit 4	306.45	367.74
1400 x 700	S147RTASTO	Kit 3	409.62	491.55
1400 x 800	S148RTASTO	Kit 3	409.62	491.55
1400 x 900	S149RTASTO	Kit 3	431.76	518.11
1500 x 760	S1576RTASTO	Kit 3	480.60	576.73
1500 x 800	S158RTASTO	Kit 3	480.60	576.73
1500 x 900	S159RTASTO	Kit 3	505.89	607.06
1600 x 700	S167RTASTO	Kit 3	536.29	643.54
1600 x 800	S168RTASTO	Kit 3	536.29	643.54
1600 x 900	S169RTASTO	Kit 3	563.09	675.70
1685 x 700	S177RTASTO	Kit 3	580.95	697.15
*1700 x 800	S178RTASTO	Kit 3	651.58	781.90
*1700 x 900	S179RTASTO	Kit 3	701.84	842.21

*Waste is centred

Offset Quadrant Tray

Size	Code	Tray Panel Kit	Price £ Exc. VAT	Price £ Inc. VAT
1000 x 800 LH	S108QLASTO	Kit 1	271.22	325.47
1000 x 800 RH	S108QRASTO	Kit 1	271.22	325.47
1200 x 800 LH	S128QLASTO	Kit 1	285.52	342.63
1200 x 800 RH	S128QRASTO	Kit 1	285.52	342.63
1200 x 900 LH	S129QLASTO	Kit 1	336.91	404.29
1200 x 900 RH	S129QRASTO	Kit 1	336.91	404.29

This product is handed – please choose L for Left and R for Right when ordering.

Quadrant Tray

Size	Code	Tray Panel Kit	Price £ Exc. VAT	Price £ Inc. VAT
800 x 800	S80QASTO	Kit 2	178.72	214.47
900 x 900	S90QASTO	Kit 2	199.85	239.82

Square Tray

Size	Code	Tray Panel Kit	Price £ Exc. VAT	Price £ Inc. VAT
800 x 800	S80SQASTO	Kit 4	163.37	196.05
900 x 900	S90SQASTO	Kit 4	188.69	226.42

Tray Panel Kits (including Legs)*** No Waste

Tray Panel Kit	Code	Price £ Exc. VAT	Price £ Inc. VAT
Kit 1	DRK1	125.67	150.81
Kit 2	DRK2	125.67	150.81
Kit 3	DRK3	125.67	150.81
Kit 4	DRK4	125.67	150.81

Tray Panel Kit



Graduated adjustable leg and easy-fit tray panel kit.



Graduated adjustable leg system.

Waste Complete

	Price £ Exc. VAT	Price £ Inc. VAT
DWAS	37.20	44.64



90mm fast flow waste, includes hair trap and chrome cover.

Please Note: Price and order codes on the Touchstone-SR **do not** include waste, waste must be ordered separately. **Code: DWAS**

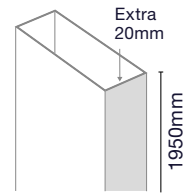
White Waste Cover

	Price £ Exc. VAT	Price £ Inc. VAT
DWASCAPWHT	17.80	21.37



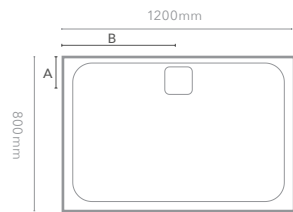
EXTENSION PROFILES

Diagram	Section	Product Name	Code	Price £ Exc. VAT	Price £ Inc. VAT
A	Arysto Sleek Matt Black	Sliding & Quadrant Doors	ASEXTAMB	82.00	98.40
A	Arysto Sleek Matt Black	Hinge & Infold Doors	ASEXTBMB	82.00	98.40
A	Arysto Sleek Brushed Brass	Sliding & Quadrant Doors	ASEXTABBR	88.00	105.60
A	Arysto Sleek Brushed Brass	Hinge & Infold Doors	ASEXTBBBR	88.00	105.60
A	Arysto Sleek Chrome	Bifold, Hinge & Infold Doors	S6EXTB	66.00	79.20
A	Arysto Sleek Chrome	Sliding & Quadrant Doors	S6EXTB	66.00	79.20



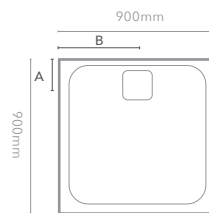
WASTE POSITIONS

Level 25 Trays



Rectangular Tray

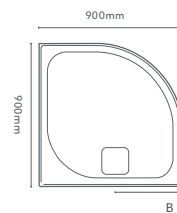
Size	Waste Position (A)	Waste Position (B)
1000 x 800	121.5	500
1000 x 900	121.5	500
1100 x 800	121.5	550
1100 x 900	121.5	550
1200 x 800	121.5	600
1200 x 900	121.5	600
1300 x 800	121.5	650
1300 x 900	121.5	650
1400 x 800	121.5	700
1400 x 900	121.5	700
1500 x 800	121.5	750
1500 x 900	121.5	750
1600 x 800	121.5	800
1600 x 900	121.5	800
1700 x 800	121.5	850
1700 x 900	121.5	850



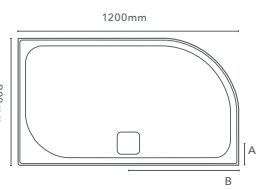
Square Tray

Size	Waste Position (A)	Waste Position (B)
900 x 900	121.5	450

Quadrant Tray



Offset Quadrant Tray



Quadrant Trays

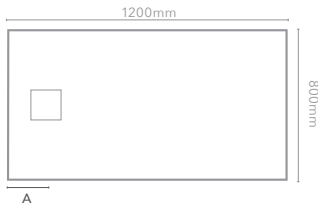
Size	Waste Position (A)	Waste Position (B)
900 x 900	121.5	450
1200 x 900	121.5	600

Quadrant Tray Handling



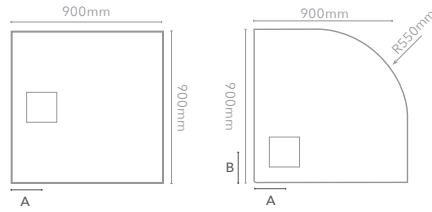
Left Handed (L) Right Handed (R)
This product is handed. Please choose L for Left or R for Right when ordering.

TrueStone Trays



Rectangular Tray

Size	Waste Position (A)	Waste Position (B)
1000 x 800	200	400
1200 x 800	250	400
1200 x 900	250	450
1400 x 800	350	400
1400 x 900	350	450
1500 x 800	400	400
1500 x 900	400	450
1600 x 800	450	400
1600 x 900	450	450
1700x800	500	400
1700 x 900	500	450

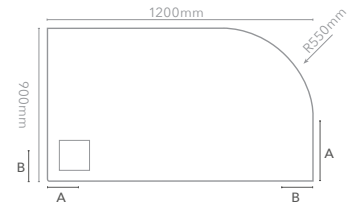


Square Tray

Size	Waste Position (A)	Waste Position (B)
900 x 900	270	450

Quadrant Tray

Size	Waste Position (A)	Waste Position (B)
900 x 900	270	270



Offset Quadrant Tray

Size	Waste Position (A)	Waste Position (B)
1200x900	270	270

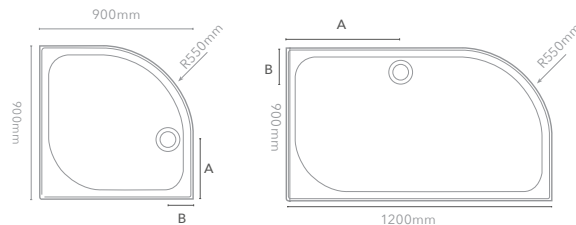
Please Note: For all trays, waste dimensions are to the centre of waste.

Touchstone Trays



Rectangular Tray

Size	Touchstone	Waste Position (A)	Waste Position (B)
800 x 700	X	147	
800 x 760	X	147	
900 x 700	X	147	
900 x 760		147	
900 x 800	X	147	
1000 x 700	X	147	
1000 x 760	X	147	
1000 x 800	X	147	
1000 x 900	X	147	
1100 x 760		147	
1100 x 800	X	147	
1200 x 700	X	147	
1200 x 760	X	147	
1200 x 800	X	147	
1200 x 900	X	147	
1300 x 800	X	147	
1400 x 700	X	147	
1400 x 760	X	147	
1400 x 800	X	147	
1400 x 900	X	147	
1500 x 700	X	147	
1500 x 760	X	147	
1500 x 800	X	147	
1500 x 900	X	147	
1600 x 700	X	147	
1600 x 800	X	147	
1600 x 900	X	147	
1685 x 700	X	147	
1680 x 760	X	147	
1700 x 800	X	130	850
1700 x 900		130	850
1800 x 800	X	130	900

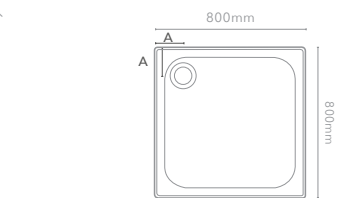


Quadrant Tray

Size	Touchstone	Waste Position (A)	Waste Position (B)
800	X	250	130
900	X	350	130
1000		350	130

Offset Quadrant Tray

Size	Touchstone	Waste Position (A)	Waste Position (B)
900 x 760 L		250	130
900 x 760 R		250	130
1000 x 800 L	X	350	130
1000 x 800 R	X	350	130
1200 x 800 L	X	450	130
1200 x 800 R	X	450	130
1200 x 900 L	X	450	130
1200 x 900 R	X	450	130
1400 x 800 L	X	1100	290
1400 x 800 R	X	1100	290



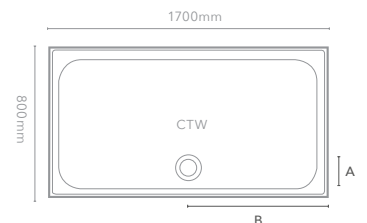
Square Tray

Size	Touchstone	Waste Position (A)	Waste Position (B)
760	X	147	147
800	X	147	147
900	X	147	147

Rectangle Tray

Size	Waste Position (A)	Waste Position (B)
1700 x 800	147	850
1700 x 900	130	850

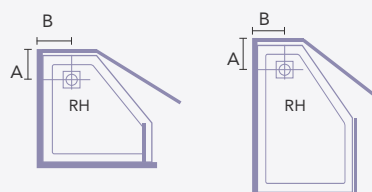
Waste is centred for MStone 1700x800 - D178RT / Touchstone 1700x800 - S178RTASTO & 1700x900 - S179RTASTO



Pentangle Tray

Pentangle Tray

Size	Waste Position (A)	Waste Position (B)
900 x 900	200	250
1200 x 900	200	250
1400 x 900	200	250



PRODUCT INFORMATION

- › All products are manufactured in accordance with EN 14428 and utilise toughened safety glass to EN 12150. Electrical products comply with all relevant European standards including RoHS, WEEE and IP ratings.
- › All doors feature adjustable wall profiles to compensate for out-of-true walls and have micro adjustment features for fine tuning to obtain a perfect fit and operating action.
- › All wall hinge doors need to be fixed to a solid wall or adequately secure fixing.
- › All standard products are supplied complete with full installation instructions and the necessary fixings.
- › Bespoke sizes cannot be cancelled once order has been processed.
- › Product descriptions do not imply the use of precious or valuable materials.
- › Bath screens are not designed to fit on baths with stepped fronts roll top rims or integral soap dishes.
- › Standard Products - Opened cartons can not be returned. Returns carry a £40 single box charge or £60 per unit where the sale is less than 30 days old. Returns over 30 days old will not be accepted. MERLYN do not accept returns on any bespoke products.
- › ARYSTO TEN by MERLYN is frameless in design. Spray/mist may escape therefore we would recommend use of these enclosures with tiled floors.
- › Water retention is maintained in all products under normal showering conditions. Water jetted, with pressure, directly at joints, seals or openings can naturally force an exit.
- › All enclosures, wetrooms and panels are Power Shower approved – will retain water under normal showering conditions.
- › Only shower enclosures, panels and bath screens are covered by the lifetime guarantee. Please contact the MERLYN sales team for more details.
- › For full details on all product ranges please contact MERLYN.
- › Glass shattering and parts subject to wear are not covered by the lifetime guarantee. Electrical products have a 5 year guarantee and are not covered by the lifetime guarantee.
- › Chrome and Nickel components may differ due to the use of different materials. Please check with your ARYSTO dealer for accurate matching of material samples.
- › Images are for illustrated purposes only. The colours and finishes shown in the catalogue are as accurate as possible within the limits of the printing process. The positioning of all showering heads in the brochure is for illustrative purposes only.
- › Do not direct water directly at the eyelet handle as water will pass through. It is the responsibility of the designer / installer to ensure that the shower head is positioned so this is not an issue.

N.B. We strongly recommend that you use a MERLYN recognised Surveyor and Fitter. CAD or scaled drawings are required especially for sloping panels and panels with dwarf walls. All drawings need to be signed off.

LIFETIME GUARANTEE

At MERLYN research and development is an integral part of the business. All products go through rigorous testing processes so much so that we can confidently stand behind our products and therefore we offer a Lifetime Guarantee covering all manufacturing defects ensuring ultimate peace of mind.

Glass shattering and parts subject to wear are not covered by the lifetime guarantee. Electrical products have a 5 year guarantee and are not covered by the lifetime guarantee.

Please note that the Mershield™ is not covered under the guarantee as it is solely dependent on the owner's water supplier and the level of care and maintenance it receives.

MERLYN Customer Service

T: United Kingdom 0808 1011 429 / Ireland 056 779 1555

UKCA, CE AND EN INFORMATION

The UKCA (UK Conformity Assessment) mark on MERLYN enclosures is the new standard marking for products on the market in Great Britain (England, Wales and Scotland). It is a declaration that the product complies with GB designated standards.

The CE markings on MERLYN enclosures is a declaration that the product complies with the essential requirements of the relevant European health, safety and environmental protection legislation.

EU and GB legislation requires manufacturers to display either the UKCA mark for Great Britain and a CE mark for the EU and Northern Ireland on their product or packaging. It is an offence to place a product on the relevant market without a UKCA for Great Britain or CE marking for the EU market.

The manufacturer is legally responsible for ensuring that the product conforms to the requirements of both directives.

The European Commission thus refers to the CE marking as a "Passport" which allows products to be freely circulated within the EU single market. The UKCA marking allows products to move freely within Great Britain.

Often consumers will consider the UKCA and CE markings on a product as an indication of conformance to laid down minimum standards and therefore, a minimum level of safety which other products may lack. Both markings are often seen by consumers as a "Symbol of Safety."



IMPORTANT

For bespoke sizes please provide overall measurements i.e. tile-to-tile or tile-to-outside edge of tray, all surfaces including trays, walls and floors, all angles and cut-outs etc.

MERLYN accept no responsibility for any incorrect measurements and details provided by customers or retailers. Any order placed to correct the mistake is treated as a new order and will be charged as such. MERLYN do not accept any returns on any bespoke products.

N.B. Please note that when a tray is fitted it is essential that the tray is level before any doors or enclosures are fitted.

Important Shower Tray Information

Although shower door and enclosure sizes are related to tray sizes it is important to note that most shower trays are tiled down to the rim, often over an "up-stand". The finished installation space may be less than the nominal tray size. ARYSTO shower enclosures are made to suit this remaining space.

The illustrated guide (diagrams on right of page) may be helpful in taking measurements to determine the shower door or enclosure size required. Dimensions given in this publication are in millimetres, are approximate and may vary with adjustment. They are subject to change without notice.

Tray

Ensure strong and secure joints between shower tray and walls, even in the event of floor settlement. Please supply floor plans, photos, site condition details and note anything that might obstruct the product. Special sizes cannot be cancelled once the order has been processed.

ADJUSTMENT

This is the min and max adjustment of the actual enclosure. Always ensure the outer most part of the enclosure frame is stepped in far enough from the edge of the tray so that the enclosure frame is sitting on a flat surface and can be sealed correctly. Some trays have larger rounded edges and may need a bigger step in. Ensure that the step in leaves adequate space for the product adjustment.

N.B. Take the measurements after the tray is installed and the walls are tiled.

Disposal and Recycling End of product life

When the product reaches the end of its serviceable life it needs to be disposed of safely and brought to or collected by an approved authorised treatment facility.

Batteries

Used batteries need to be disposed of responsibly and not with your normal household waste. Please contact your local authority for information on recycling and safe disposal.



IMPORTANT SHOWER TRAY INFORMATION

- › It is up to the designer or installer to ensure that the tray and enclosure combination is arranged in such a way that water retention meets the customers needs.
- › The waste has the capacity to carry away 29L/Min. High powered systems may exceed this. Please check with the manufacturer.
- › Please ensure that the shower head is not positioned directly over the waste as this may restrict water flow rate.
- › Please ensure that the colour and size of shower tray are as per your order before installation.
- › You must inspect the product thoroughly before installation. Fitting the product is acceptance of quality.
- › The trays are handmade from natural material. Please allow for height variances due to manufacturing tolerances.
- › For open ended shower screens please consult your installer.
- › Shower trays must be fitted as per the fitting instruction. Deviation from the pre installation checks or fitting installation will void the guarantee.

CLEANING

- › When wet, the surface of the majority of shower trays will show an increase in the potential for slipping. This is particularly the case when soap, shampoo, bath oil etc. are used. It is important that designers, installers and users are aware of this. It is important to clean your MERLYN shower door after every use.
- › Wipe down all the glass and metal parts with a soft cloth.
- › Do not allow lime scale to build up in hard water areas.
- › Ensure that any residual water on the glass is removed after every use.
- › Clean the glass regularly using soapy water.
- › Do not use abrasive products on any surfaces.
- › Install the enclosure in a well ventilated area.
- › When cleaning your ARYSTO X do not direct a high pressure stream at the seals or at a point of overlap between 2 panels as some water may escape.

Information and Maintenance

Always read the instructions on the packaging. Chrome is vulnerable to acid attack and some strong household cleaners including strong disinfectants, denture cleaners, hair dyes, wine making chemicals and photographic chemicals may contain acid. These materials may have a varying effect on the surface from black spots/streaks (which cannot be removed) to pitting the surface. Contact with these materials should be avoided.

ISO CERTIFICATION

MERLYN has implemented an Integrated Management System comprising of Quality Management, Environmental Management and Occupational Health and Safety Management. An Integrated Management System ensures the seamless integration of several different standards into a common system that meets the requirements of each of these standards. These certifications are proof of MERLYN'S credibility but also to instil confidence in our potential clients that MERLYN will keep its promises.



The ARYSTO collection is available from specialist retail showrooms only. Our dedicated and highly trained MERLYN Sales Team are waiting to provide all the professional assistance and advice needed to help you choose the right enclosure.

Due to our policy of continuous improvement we reserve the right to amend prices, specifications and designs without prior notice.

All material and illustrations included in this catalogue are the copyright of MERLYN Industries Ltd. and cannot be used without prior written permission and credit in any other advertisements, brochures, publication, correspondence, any medium what so ever whether written or electronic including the internet.

All Rights Reserved.

MERLYN™

Unit 8 Purcellsinch Industrial Estate, Dublin Road,
Kilkenny, Ireland, R95 HP71

T: 08081011429 / F: 08081011428

E: sales@merlyn.ie / technical@merlyn.ie

www.merlynshowering.com



MERLYN™

Unit 8, Purcellsinch Industrial Estate, Dublin Road, Kilkenny, Ireland, R95 HP71.

T UK: 0808 1011 429 / IRL: 056 7791 576 or E sales@merlyn.ie

www.merlynshowering.com



ARYSTO
SLEEK

